

WEBCAST AUCTION SALE

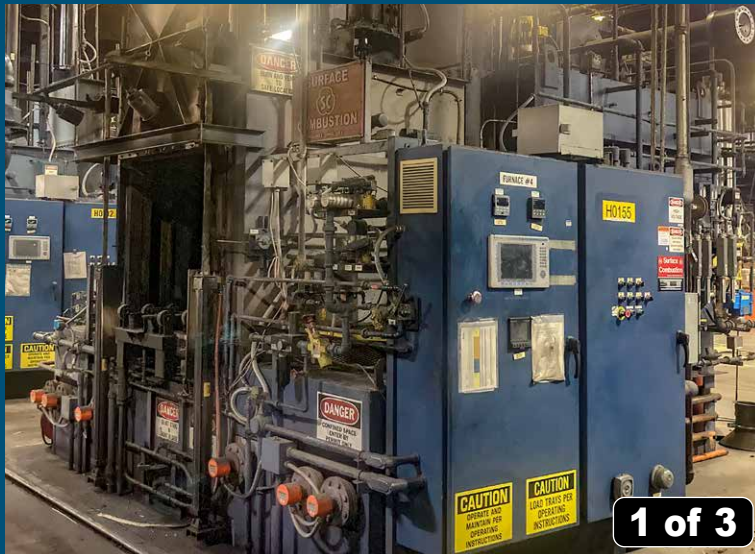
**Very Short
Notice Sale!**

PLANT CLOSURE OF A MAJOR TIER ONE AUTOMOTIVE HEAT TREAT SUPPLIER

WEBCAST AUCTION SALE: Tuesday, February 21, 2023, 11:00am CST

INSPECTION: Monday, February 20, from 10:00am to 2:00pm CST

LOCATION: 300 E 39th Street, Hastings, Nebraska 68901



Surface Combustion AllCase Integral Quench Furnaces



Surface Combustion Gas-Fired Uni-Draw Temper Furnaces



Surface Combustion AllCase Integrated Quench Furnace



Abar Ipsen Model HR-3000-S SDA Washer

Please contact Mario Mazzuca mario@maynards.com and Robert Levy rlevy@rlevyinc.com
For additional information, or go to: www.rlevyinc.com or www.maynards.com



905 South Boulevard East, Rochester Hills, MI 48307, U.S.A.
Web: www.rlevyinc.com | Phone: 1 (248) 710-2133

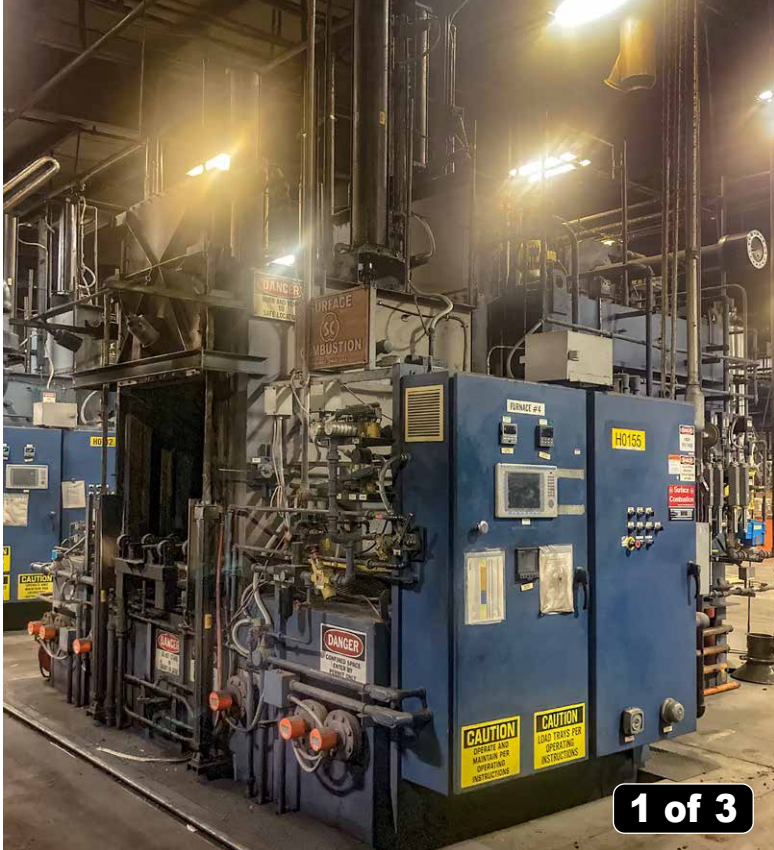


17177 N. Laurel Park Dr., Suite 236, Livonia, MI 48152, U.S.A.
Web: www.maynards.com | Phone: 1 (248) 569-9781

HEAT TREAT EQUIPMENT

(2) SURFACE COMBUSTION RX-3T-ABPE ENDOTHERMIC GAS GENERATOR; 6,000 CFH (3 retorts); Serial # AC-44420-1 (U3808) and AC-44594-1 (U3809); Natural Gas 520 CF per hour, 1000 BTU/CF; 480 Volt, 3-phase, 60 Hz; 1950-degree F Max Temp.; Dimensions: 7' wide x 13' Long x 13' High; 15,000 pounds; Waukee Flow meters; 3- Allen Bradley Panel view 1000 Controls with Honeywell Flame Relays; Roots Pump with Roots Back-Up; Air Cooled Heat Exchanger

(3) SURFACE COMBUSTION ALLCASE INTEGRAL QUENCH FURNACE; Serial # BC-44419-1 (U3805), BC-44589-1 (U3806), BC-45214-1 (U3807); Natural Gas 3175 CFH-1000 BTU/cu.ft., Trident Tubes with recuperators; 1800-degree F Max Temp; 460 Volt, 3-phase, 60Hz, 70KW; Dimensions 36" Wide x 48" Deep x 30" High; 5 Waukee Flow meters, Air, Ammonia, Natural gas, Endo and Nitrogen; Allen Bradley PanelView 1000 control; Honeywell High Limit, Quench Limit and Multipoint Recorder; Rear Handler, Plunge-Cool Feature, Dual Agitators, 6- 9KW Quench Oil Heaters, SBS Air-cooled Heat Exchanger and Cartridge Filter, Oil Heaters and 5 HP Pump



Surface Combustion Allcase Integral Quench Furnace



Ipsen Batch Temper Furnace



Ipsen Integral Quench Furnace



Surface Combustion Gas-Fired Uni-Draw Temper Furnace

Major Tier One Automotive Heat Treat Supplier

HEAT TREAT EQUIPMENT

(2) SURFACE COMBUSTION GAS-FIRED UNI-DRAW TEMPER FURNACE; Serial # BC-44590 (U3810), BC-44591 (U3811); 390 SCFH, 1000 BTU/cu.ft.; Maxon 412M Burner; 350-degree F to 900-Degree F Temperature Range; Workable Dimensions 36" Wide x 48" Deep x 36" High; 460Volt, 3-Phase, 60 Cycle (5 KW); Honeywell Controller, Hi-Limit and Temperature Recorder; Type K Thermocouples with 3-Port Survey Port

SURFACE COMBUSTION WASHER: Spray/Dunk/Agitate (Smart-Skim System) 5HP Spray Pump; Serial # BC-44592 (U3812); Natural Gas, 300 CFH, 1000 BTU/cu.ft.; 460 Volt, 3-Phase, 60 Hz, 10 KW; 150-Degree F to 180-Degree F; 36" Wide x 48" Long x 36" High; Honeywell Temperature Control; Allen Bradley PLC

ABAR IPSEN HR 50X48, 2 BAR HORIZONTAL VACUUM FURNACE; Serial# BM 1072(V5); 460V, 3-phase, 60Hz; 2500-degree F Max Temp; 36" Wide x 48" Deep x 30" High; Nitrogen or Argon Atmosphere; Spencer Turbo Blower 50HP, 4400cfm; 225 KVA Hunterdon VRT Power Supply; SR Type Thermocouples; Varian HS-20 Diffusion Pump; Stokes 412 10 Hp Roughing Pump; Stokes 615-1 Booster Pump; Edwards RV-8 Holding Pump; Molybdenum Shielding; Honeywell DCP 700 Programming Controller; Honeywell UDC Over Temp Safety Controller; Honeywell DPR 3000 Digital Chart Recorder; Leybold CM 31 Vacuum Gauge, *(Off Site, Please Contact Auctioneer for Information)*

WISCONSIN OVEN CORPORATION EWN-820-8G GAS-FIRED BATCH OVEN; Serial # 115080902; Working Dimensions 96" Wide x 240" Deep x 96" High; 480V, 3-Phase, 60Hz, 35 Amps; 650-Degree F Max Temp; Natural Gas @ 1.0 MM BTU; Control Panel Mounted with Temp Controls and Round Chart Recorder on Oven; Front and Rear Doors Vertical Rising; (3) Fans located on Top of Unit, *(Off Site, Please Contact Auctioneer for Information)*

JENSEN INDUSTRIES GAS-FIRED BATCH OVEN; Serial # 6682-02; 72" Wide x 72" Deep x 72" High; 460V, 3-Phase, 60 Hz, 60 Amps; 500-Degree F Max Temp; Natural Gas @ 1500 CFH; Nema 12 Control Panel; Honeywell Over Temp Control and Round Chart Recorder; Powered Exhaust; Front and Rear Doors, *(Off Site, Please Contact Auctioneer for Information)*



Surface Combustion Gas-Fired Uni-Draw Temper Furnace



Surface Combustion Washer



Abar Ipsen HR 50x48, 2 Bar Horizontal Vacuum Furnace



Wisconsin Oven Corporation EWN-820-8G Gas-Fired Batch Oven



Jensen Industries Gas-Fired Batch Oven

HEAT TREAT EQUIPMENT

IPSEN INTEGRAL QUENCH FURNACE; Model I/O-3036-G; 460 Volt, 91 KW; 36" Wide x 48" Deep x 36" High; 1800-Degree Max Temp; Serial # 60603 (U3813)

ABAR IPSEN INTEGRAL QUENCH FURNACE; Model I/O-FQ-3036-G; 460 Volt, 90 KW; 36" Wide x 48" Deep x 36" High; 1800-Degree Max Temp; Serial # 59649 (U3814)

ABAR IPSEN INTEGRAL QUENCH FURNACE; Model I/O-3000-G; 460 Volt, 61 KW; 36" Wide x 48" Deep x 30" High; 1800-Degree Max Temp; Serial # 59622 (U3815)

ABAR IPSEN INTEGRAL QUENCH FURNACE; Model I/O-3000-G; 460 Volt, 114 KW; 36" Wide x 48" Deep x 30" High; 1800-Degree Max Temp; Serial # 60345 (U3816)

IPSEN BATCH TEMPER FURNACE; Model 1DL-30x36-G; 36" Wide x 48" Deep x 36" High; 900-Degree Max Temp; Serial # 59435 (U3817); Year 1985

ABAR IPSEN BATCH TEMPER FURNACE; Model 1DL-30x36-G; 36" Wide x 48"



Surface Combustion Allcase Integral Quench Furnace



Abar Ipsen Integral Quench Furnace



Surface Combustion Allcase Integral Quench Furnace



Ipsen Batch Temper Furnace

Major Tier One Automotive Heat Treat Supplier

HEAT TREAT EQUIPMENT

ABAR IPSEN BATCH TEMPER FURNACE; Model 1DL-30x36-G; 36" Wide x 48" Deep x 36" High; 900-Degree Max Temp; Serial # 59644 (U3818); Year 1987

ABAR IPSEN BATCH TEMPER FURNACE; Model DL-3000-E; 36" Wide x 48" Deep x 30" High; 460 Volt, 90 KW; 900-Degree Max Temp; Serial # 60019 (U3819); Year 1987

ABAR IPSEN SDA WASHER; Model MRD-30x36-G; 30" Wide x 36" Deep x 36" High; 180-Degree Max Temp; Serial # 59645 (U3823); Year 1987

ABAR IPSEN SDA WASHER; Model HR-3000-S; 30" Wide x 36" Deep x 36" High; 180-Degree Max Temp; Serial # 60020 (U3824); Year 1987

(3) ABAR IPSEN CHARGE CAR; Model LDR-UNLDR 36x48; 36" Wide x 48" Deep; 460V, 4.75A, 2.3KW

(3) ABAR IPSEN DOUBLE HOLDING STATION; 36" Wide x 96" Long

SBS HEAT EXCHANGER MODEL 3084-6; 96" x 48" x 2.5"

SBS HEAT EXCHANGER; 72" x 28" x 2.0" inlet/outlet; 100 MAWP@450-Degree F; Serial # 4072 (U3827d); Year 2003

SBS HEAT EXCHANGER; 72" x 36" x 2.0" inlet/outlet; 100 MAWP@450-Degree F; Serial # 4098 (U3827e)

SBS HEAT EXCHANGER; 72" x 28" x 2.0" inlet/outlet; 100 MAWP@450-Degree F; Serial # 4470 (U3827f); Year 2005 inlet/outlet; Serial # 2502 (U3827a)

SBS HEAT EXCHANGER; 72" x 36" x 2.5" inlet/outlet; 100 MAWP@450-Degree F; Serial # 7297 (U3827g); Year 2013

SBS HEAT EXCHANGER; 72" x 48" x 2.0" inlet/outlet

SBS HEAT EXCHANGER; 72" x 36" x 2.0" inlet/outlet; 100 MAWP@450-Degree F; Serial # 4095 (U3827c); Year 2004



Abar Ipsen Electric Nitrogen Batch Temper



Abar Ipsen SDA Washer



Abar Ipsen Batch Temper Furnace

ROLLING STOCK AND OVERHEAD CRANES

(3) ABAR SCISSOR LIFT 36" X 48"

(2) 2-TON OVERHEAD CRANE

(1) 1-TON OVERHEAD CRANE

Buyer's Premium: 18% for all purchases.

Removal: All items are being purchased F.O.B. Price for dismantle and loading will be published prior to the auction sale. All items must be removed by February 28th.

Please contact

Mario Mazzuca mario@maynards.com and
Robert Levy rlevy@rlevyinc.com

For additional information, or go to:

www.rlevyinc.com or www.maynards.com