

# MAJOR PLANT SALE

Online Auction – September 29  
Hörselberg-Hainich, Thüringen Germany



*By Order of Secured Party*

## COMPLETE CLOSURE OF A MAJOR TIER ONE AUTOMOTIVE COMPONENT & POWERTRAIN MANUFACTURING GROUP



Over 1,000 Assets As New As 2017

**MANUFACTURERS OF:** Automotive Engine Lines & Components,  
Transmission Housings, Chassis Components

**INCLUDING:** Over 150 CNC Machining Centers, Washing Machines,  
Leak Testing Machines, Grinders, Deep Drilling Machines, Deburring, Honing,  
Con-Rod Crackers, Marking and Heat Treat, Inspection Equipment,  
Large Quantities of Shop and Factory Tooling, Supplies and Real Estate

For more information, please visit: [www.maynards.com](http://www.maynards.com)

**Maynards**  
SINCE 1902

[www.maynards.com](http://www.maynards.com)

**ROBERT LEVY ASSOCIATES, LLC**  
CAPITAL ASSET MANAGEMENT DONE RIGHT

[www.rlevyinc.com](http://www.rlevyinc.com)

**Gordon Brothers**  
1903

[www.gordonbrothers.com](http://www.gordonbrothers.com)

# COMPLETE CLOSURE OF A MAJOR TIER ONE AUTOMOTIVE COMPONENT & POWERTRAIN MANUFACTURING GROUP

Formerly Used for Machining Engine Parts, this Equipment Can Be Used in a Wide Range of Applications

## OVER 1,000 ASSETS IN THE HÖRSELBERG-HAINICH FACILITY AS NEW AS 2017, INCLUDING:

CNC Machining Centers for Cubic Components Up to 800 x 1000 mm • Washing Machines • Leak Testing Machines • Grinders • Deep Drilling, Deburring, Honing, Con-Rod Crackers, Marking and Heat Treat Robots • Cranes • Inspection Equipment • Factory Vehicles • Supply Systems • Large Quantities of Shop and Factory Tooling and Supplies

Premium Brands Include: SEMAG, HELLER, HECKERT, NAGEL, INDA, KUKA, DÜRR, PAUL KÖSTER



Partial View of SAMAG & STARRAG-HECKERT CNC Horizontal Machining Centers

FOR MORE INFORMATION ABOUT THIS SALE, CONTACT:

Adrian Matuszczak Project Manager T. +49 208 6258788 e.adrian@maynards.com



**OVER 150 CNC MACHINING CENTERS**



**STARRAG-HECKERT CNC Machining Centers**



**HECKERT CNC Machining Centers with Dürr Cleaning Machine**



**SAMAG CNC Horizontal Machining Centers with Loading Robots**



**STARRAG-HECKERT CNC Machining Centers**



**HELLER CNC Horizontal Machining Center with Head Changing System**



**HUELLER HILLE CNC Horizontal Machining Center**



**OVER 150 CNC MACHINING CENTERS**



**SAMAG** CNC Horizontal Machining Centers



Partial View of **STARRAG-HECKERT** CNC Machining Centers



Partial View of **IXION** CNC Deep Drilling Machines



**SAMAG & STARRAG-HECKERT** CNC Machining Centers



**SAMAG** and **HONSBERG LAMB** CNC Machining Centers



CNC Machining Cell with Automated Load/Unload System



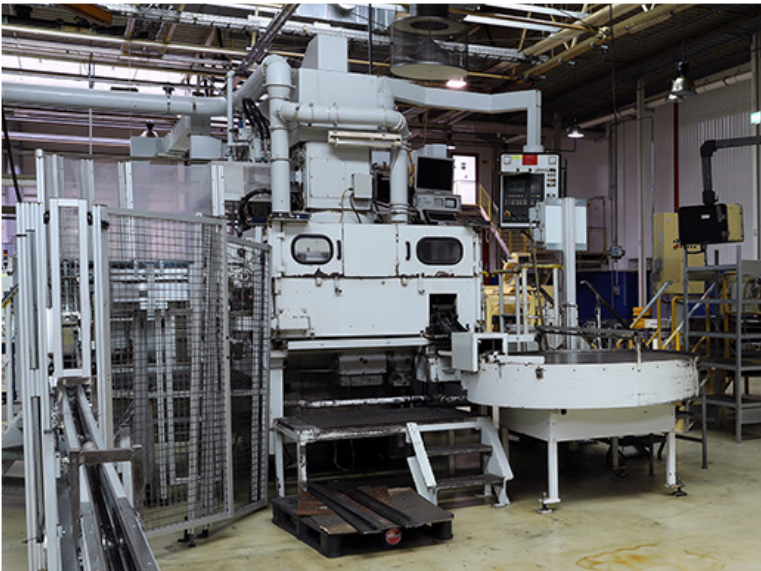
**OVER 1,000 MACHINES**



**STARRAG-HECKERT CWK 1250** Horizontal Machining Center,  
for Workpieces up to Diameter 1,800x1,550mm, Spindle 20 - 6,000rpm,  
HSK-A 100 40kW 1,200Nm



**SAMAG WBM 2 - 800.4** CNC 4-Spindle Deep Drilling Machine,  
Min/Max Diameter 2, 5-18mm, Max Drilling Depth 800mm, Z/W 800mm,  
4 Spindles 5, 5/7, 7kW 0-10,000rpm / HSK 80



**DISKUS DDS 750 IV CRVA** Double Face Grinding Machine,  
Workpiece Thickness 2-70mm, Max. Workpiece Diameter 250mm,  
Grinding Wheel Speed 870rpm, Through-Feed and Plunge Grinding



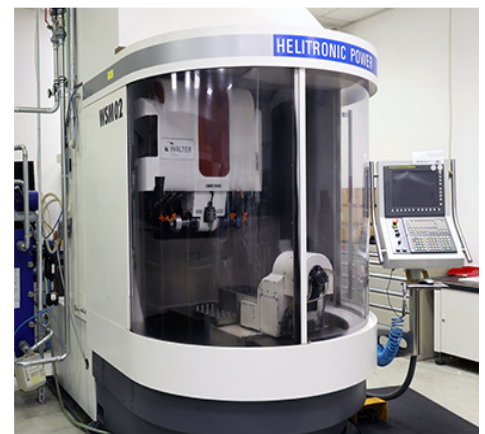
**HUELLER-HILLE NBH 230 R** Horizontal Machining Center, X/Y/Z  
1,200/1,000/1,000mm with B-Axis, Spindle 7,500rpm / HSK-A 100,  
ATC 80, Feeds 60m/min, Pallet 630x800mm



**KLINGELNBERG P26** CNC Gear Tester



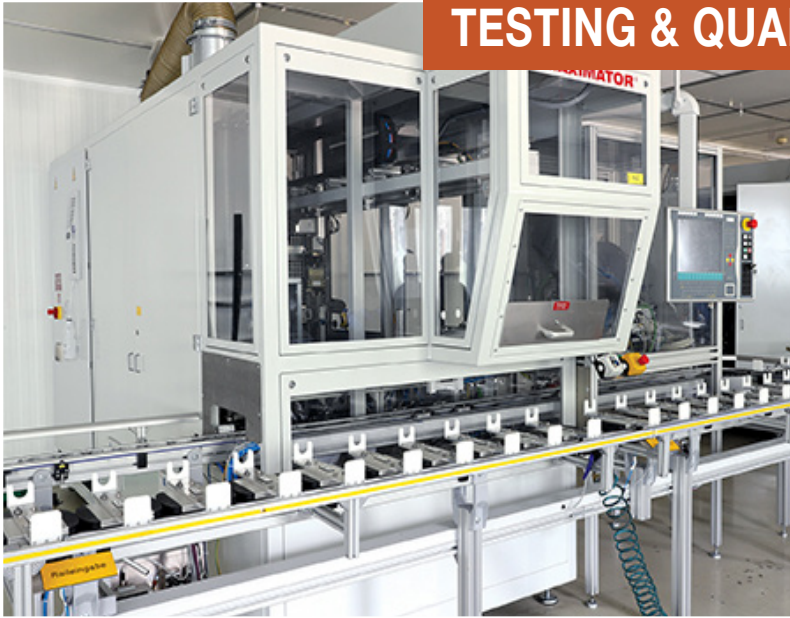
**ZEISS EVO MA 25**  
Scanning Electron Microscope



**WALTER HELITRONIC Power F** 5-Axis  
CNC Tool Grinding Machine



## TESTING & QUALITY CONTROL



**MAXIMATOR** Leak Testing Machine with Conveyor Handling Module



**WERNER BAYER** Core Plug Insertion, Leak Test & Identity Marking System

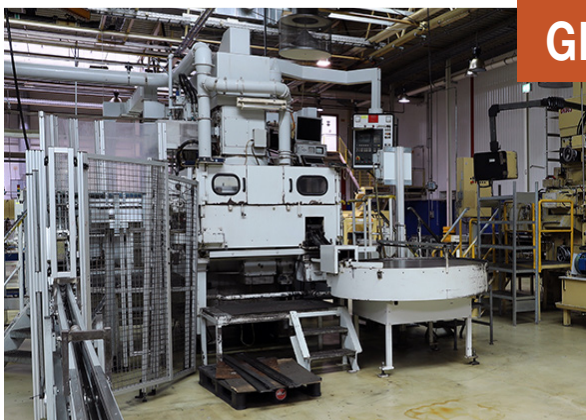


**PAUL KÖSTER** Leak Testing Machine



**MAHR FORMTESTER MFK6** Coordinate Measuring Machine

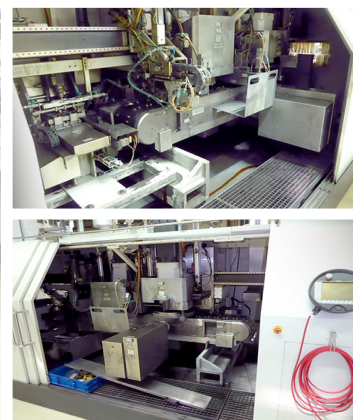
## GRINDING MACHINES



**DISKUS** Double Face Surface Grinding Machines



**LINEAR ABRASIVE** Through-Feed Grinding Machine





**DEBURRING, HONES & WASHERS**



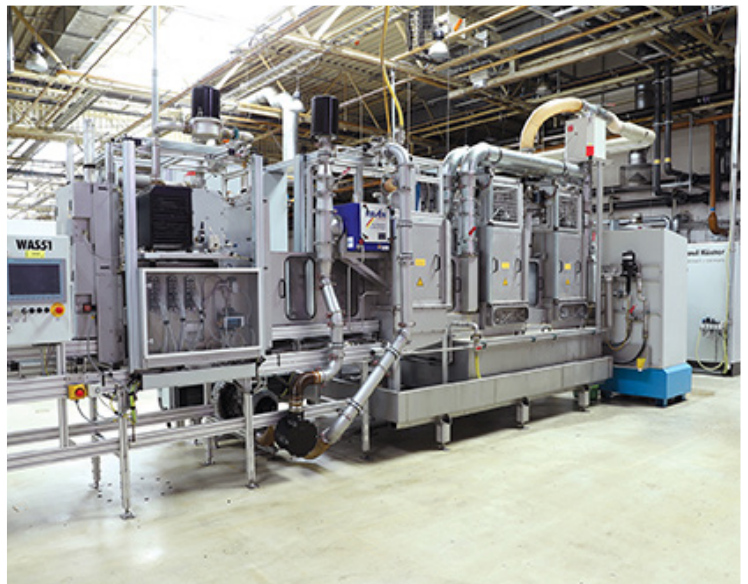
**SITEC** Deburring Machines



**NAGEL** 12-Spindle Transfer-Honing Machine for Engine Blocks



**TRUMPF** Marking Station



Parts Washing Machine



Parts Handling Portal with **ABB** Robot



**RASOMA / GAERTNER / KUKA EBZ** End Machining Unit and  
KUKA Handling Robot and Laser-Marking System



# MAJOR PLANT SALE

Online Auction – September 29 – Hörselberg-Hainich, Thüringen Germany

## COMPLETE CLOSURE OF A MAJOR TIER ONE AUTOMOTIVE COMPONENT & POWERTRAIN MANUFACTURING GROUP



**Maynards**  
SINCE 1902

Maximilianstraße 4b  
82319 Starnberg  
Bavaria, Germany

## NEGOTIATED SALE OF COMMERCIAL REAL ESTATE MANAGED BY:



**Frank Weber**  
Head of Industrial Agency Germany  
Frank.Weber@eu.jll.com  
+49 (0)89 2900 881 10

**Daniel Sehnert**  
Team Leader Industrial Agency Leipzig  
Daniel.Sehnert@eu.jll.com  
+49 (0)341 22633 15

### Hörselberg-Hainich

Industrial Land: Approx. 83,840 sqm  
Total Built Area: Approx. 33,000 sqm  
Industrial Area (GI)

#### Highlights

- + General Good Building Condition
- + Large Building Space
- + Greenfield for Further Development Adjacent
- + Eisenach Area as Established, Good Location For Both (Logistics & Industrial)

#### Benefits

- Modern Building on Greenfield From 1990's
- Multi-User-Capable
- Available in Short-Term
- Famous Industrial Area in Thuringia, No Noise and Traffic Emission Limits

### Witzenhausen

Industrial Land: Approx. 10,500 sqm  
Total Built Area: Approx. 8,000 sqm  
No zoning Plan,  
Commercial Area (GE)

#### Highlights

- + Production Facility
- + Good public Transport Links

#### Benefits

- Plant is Part of a Commercial Area
- Building is of Medium Quality
- Mixed Usage in the Surrounding (Warehousing, Storage, Office, Retail)
- Asset Deal

**Maynards**  
SINCE 1902

[www.maynards.com](http://www.maynards.com)

**ROBERT LEVY ASSOCIATES, LLC**  
CAPITAL ASSET MANAGEMENT DONE RIGHT

[www.rlevyinc.com](http://www.rlevyinc.com)

**Gordon Brothers**  
1903

[www.gordonbrothers.com](http://www.gordonbrothers.com)